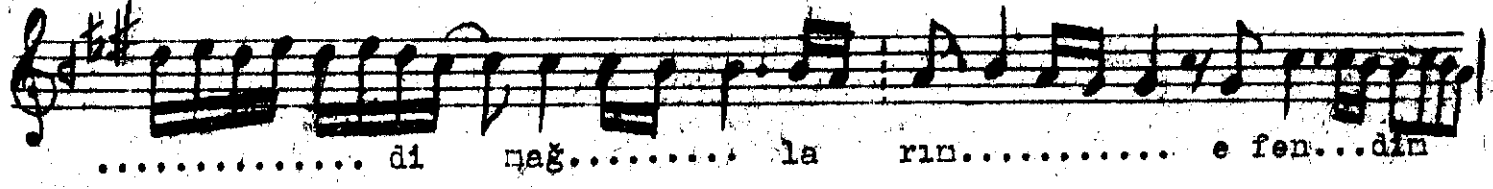
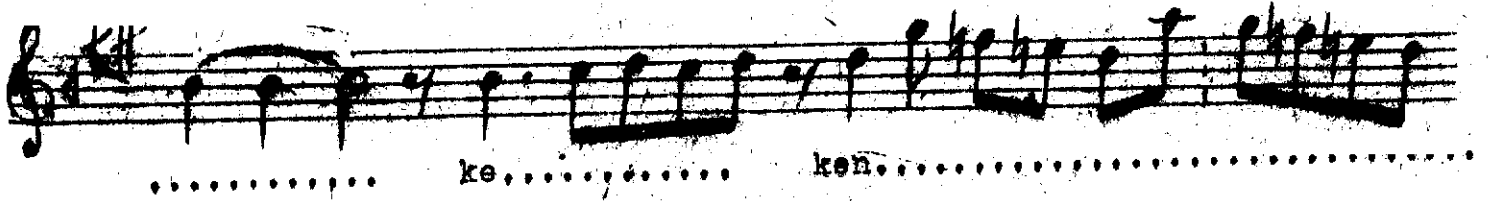


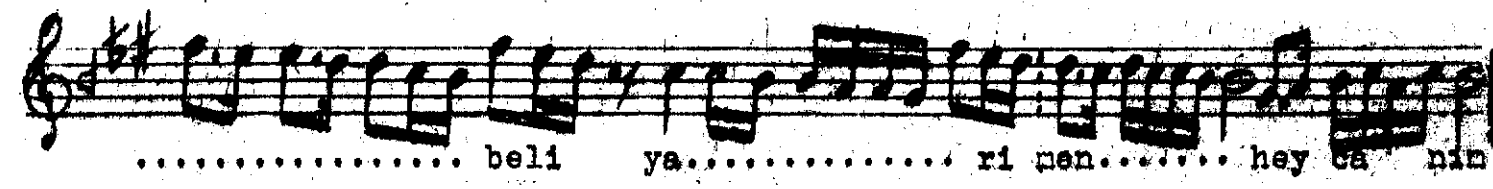
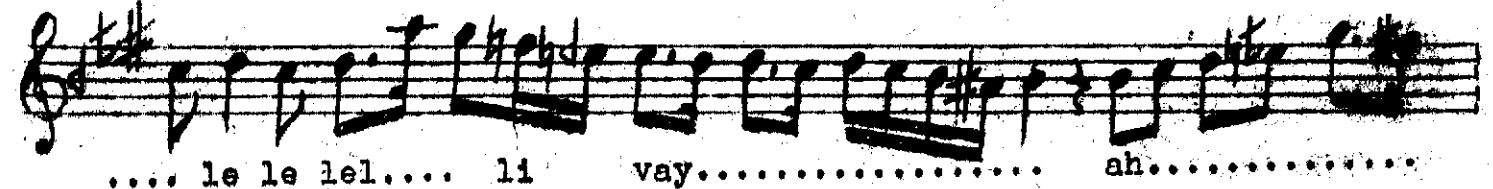
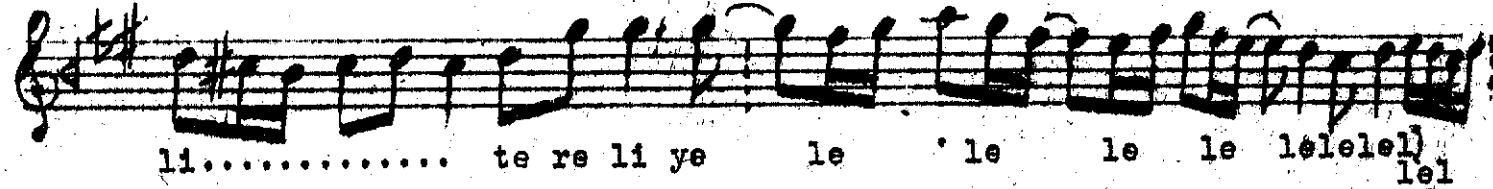
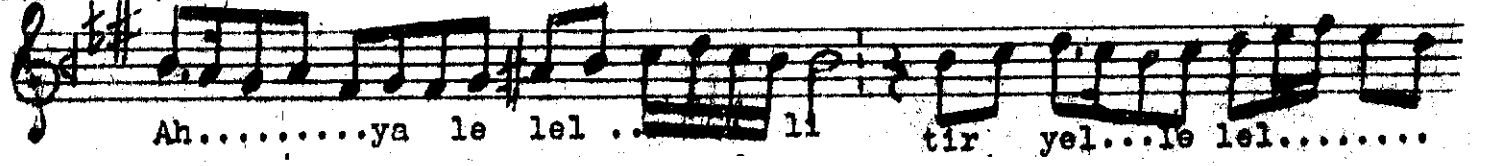
Efendi

(Aldin hayâl-i perçemîn ey nâh dideme)

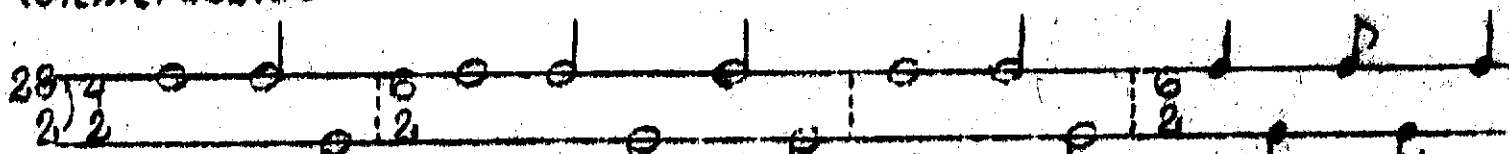
ken..... d1 nar..... →



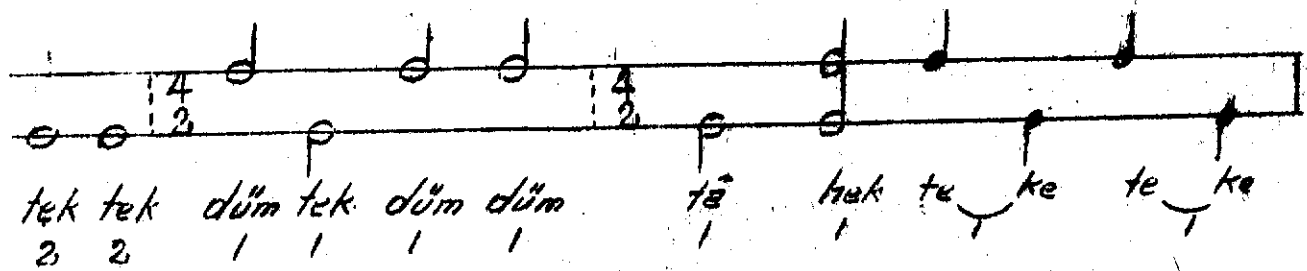
(Terennün)



(Remel/Usûlü)



2 1 1 2 1 1 1 2 1 1 2



2 2 1 1 1 1 1 1 1 1

Aldım hayâl-i perçenin ey mâh dîdene
Görürse gece hâb yüzün vâh dîdene
Ben mâcerâmı kendim anar kendim ağların
Gâh âsiyâb-ı âba bakar gâh dîdene

(Terennün)

Perçen - alna düğen saç
Mâh - ay (yüzü güzel)
Hâb - uyku
Dîde - göz
Âsiyâb - değirmen
Âb - su, Gâh - Bâzan.